

# Massachusetts State Immunization Update

27<sup>th</sup> Annual Massachusetts Adult immunization Conference  
April 5, 2022

---

PEJMAN TALEBIAN, MA, MPH

DIRECTOR, IMMUNIZATION DIVISION

MASSACHUSETTS DEPARTMENT OF PUBLIC HEALTH



# Disclosure

I, Pejman Talebian, have been asked to disclose any relevant financial relationships with ACCME-defined commercial entities that are either providing financial support for this program or whose products or services are mentioned during this presentation.

I have no relevant financial relationships to disclose.

I may discuss the use of vaccines in a manner not approved by the U.S. Food and Drug Administration, but in accordance with ACIP recommendations.

# Status of Vaccine Preventable Diseases

# Number of COVID-19 Patients in Hospital in MA (7-day average) as of March 22, 2022



#### Navigation

Today's Overview

Overview Trends

COVID-19 Cases

COVID-19 Testing

**Hospitalizations**

COVID-19 Deaths

Higher Ed & LTCF

Patient Breakdown

City & Town Data

Resources

Data Archive

#### Hospitalizations

#### ICU & Intubation

#### Patient Demographics

#### Bed Occupancy

#### Hospitalizations

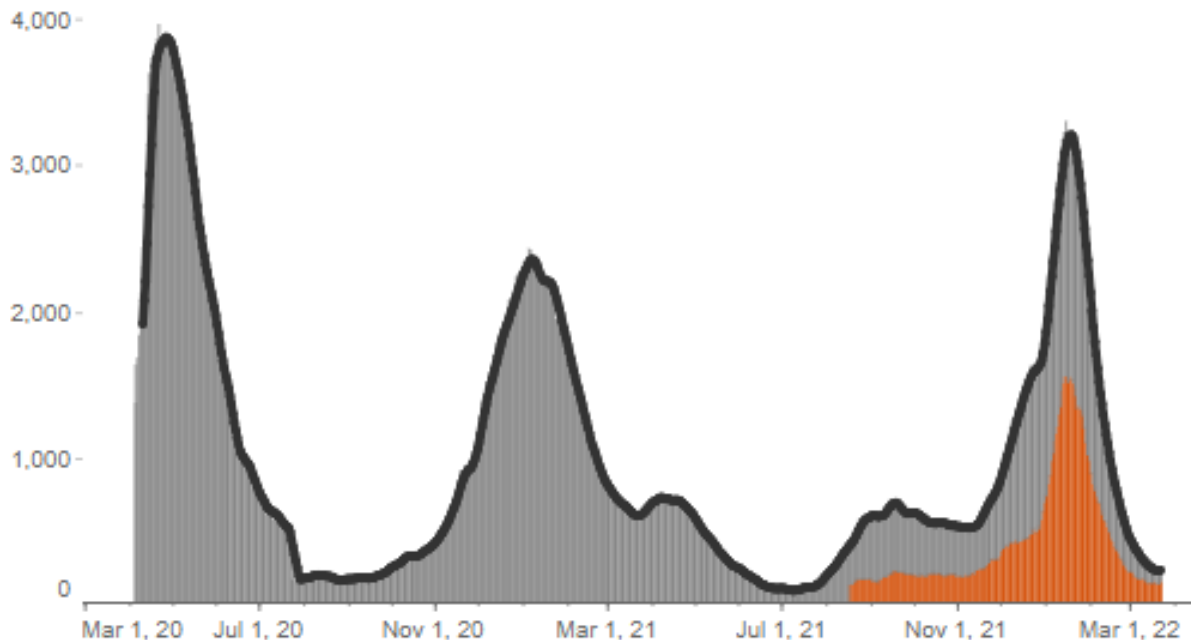
On March 22, 2022 there were **231** patients hospitalized for COVID-19.

Of those 231 patients, **145 (63%)** were reported to be fully vaccinated for COVID-19 when they contracted COVID-19.

Of those 231 hospitalized patients, **72 (31%)** were primarily hospitalized for COVID-19 related illness.\*\*

Number of COVID-19 patients in the hospital, 7-day average, and Patients reported to be fully vaccinated: All time

\*Data on patients reported to be fully vaccinated were first collected on 8/16/2021 and are not available for prior dates.



#### Graph selections

##### Time period

All time

##### Data fill (orange part of the graph)

Patients reported to be fully vaccinated

\*\*Patients are reported as being hospitalized due to COVID-19 if they received dexamethasone treatment. Administration of dexamethasone, a type of steroid medication, is considered an indicator of moderate to severe COVID-19 and provides an estimate of primary COVID-19. Hospitalization data provided by the MDPH hospital survey (survey data are self-reported by hospitals).NOTE: Self-reported hospital data are generally posted the next day. Friday's data are posted on Monday and Saturday-Monday data are posted Tuesday. Data are reported and shown broken-down by day, including Saturday and Sunday. All data included in this dashboard are preliminary and subject to change. Created by the Massachusetts Department of Public Health, Bureau of Infectious Disease and Laboratory Sciences, Division of Surveillance, Analytics and Informatics.

# Confirmed COVID-19 Deaths in MA as of March 22, 2022: 18,955



## Massachusetts Department of Public Health | COVID-19 Dashboard Deaths Caused by COVID-19

Released on: March 23, 2022  
Data as of: March 22, 2022  
Caution: recent data may be incomplete

### Navigation

Today's Overview

Overview Trends

COVID-19 Cases

COVID-19 Testing

Hospitalizations

**COVID-19 Deaths**

Higher Ed & LTCF

Patient Breakdown

City & Town Data

Resources

Data Archive

Select a time period

All time

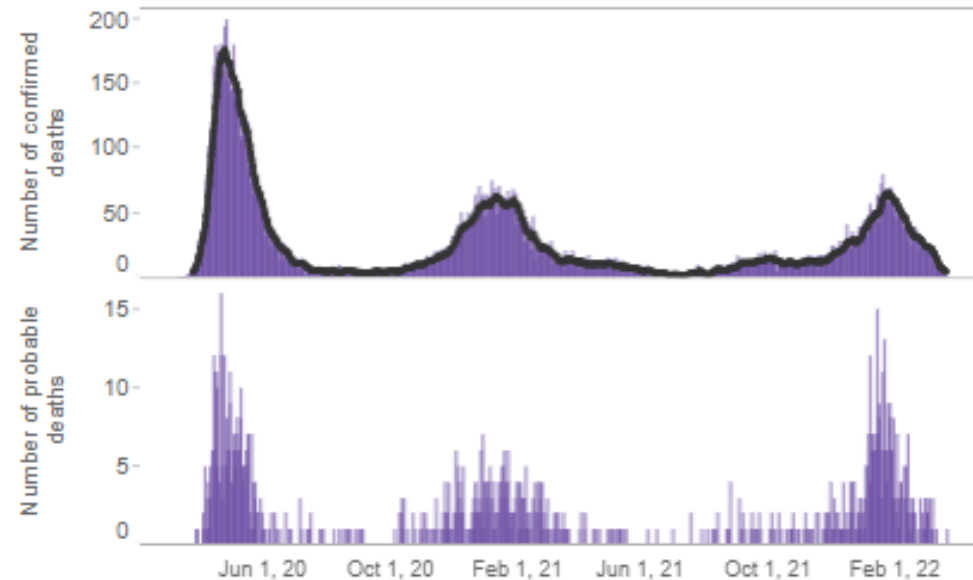
### Confirmed Deaths

There were **1** new, confirmed deaths reported. There have been **18,955** confirmed deaths in total.

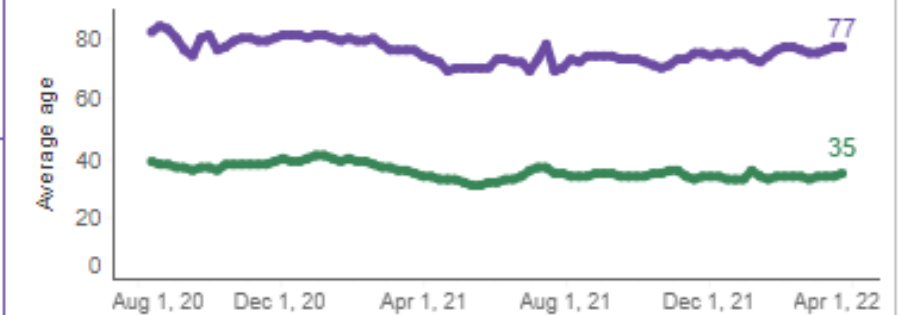
### Probable Deaths

There were **1** new, probable deaths reported. There have been **1,103** probable deaths in total.

Number of COVID-19 confirmed deaths, probable COVID-19 deaths, and 7-day average of confirmed deaths: All time



### Average ages of people who tested positive for and died of COVID-19



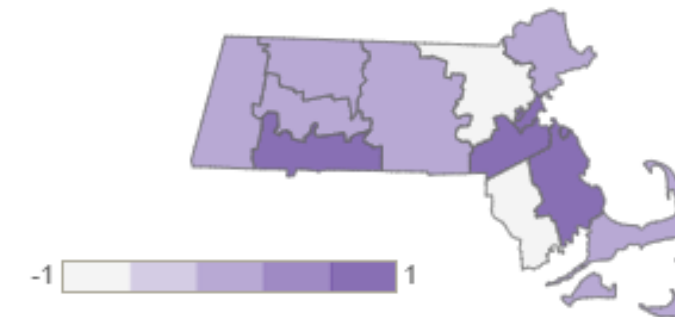
### New confirmed and probable deaths reported by county

Select new or total deaths

New confirmed and probable deaths

Select a date\*

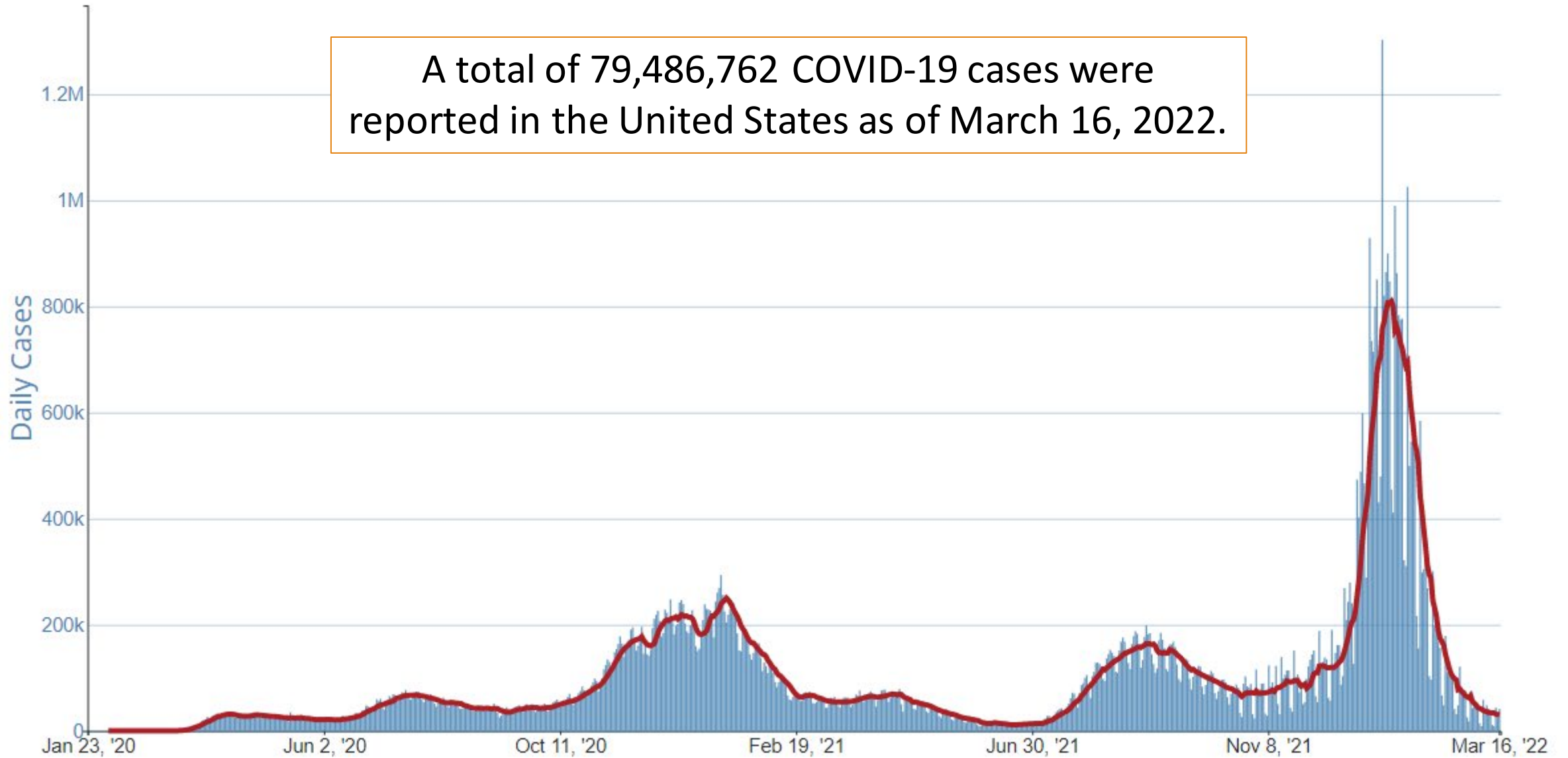
3/23/2022



All data included in this dashboard re preliminary and subject to change. Data Sources: COVID-19 Data provided by the Bureau of Infectious Disease and Laboratory Sciences and the Registry of Vital Records and Statistics; Created by the Massachusetts Department of Public Health, Bureau of Infectious Disease and Laboratory Sciences, Division of Surveillance, Analytics and Informatics. Case counts for specific cities, towns, and counties change as data cleaning occurs (removal of duplicate reports within the system) and new demographic information (assigning cases to their city or town of residence) is obtained.

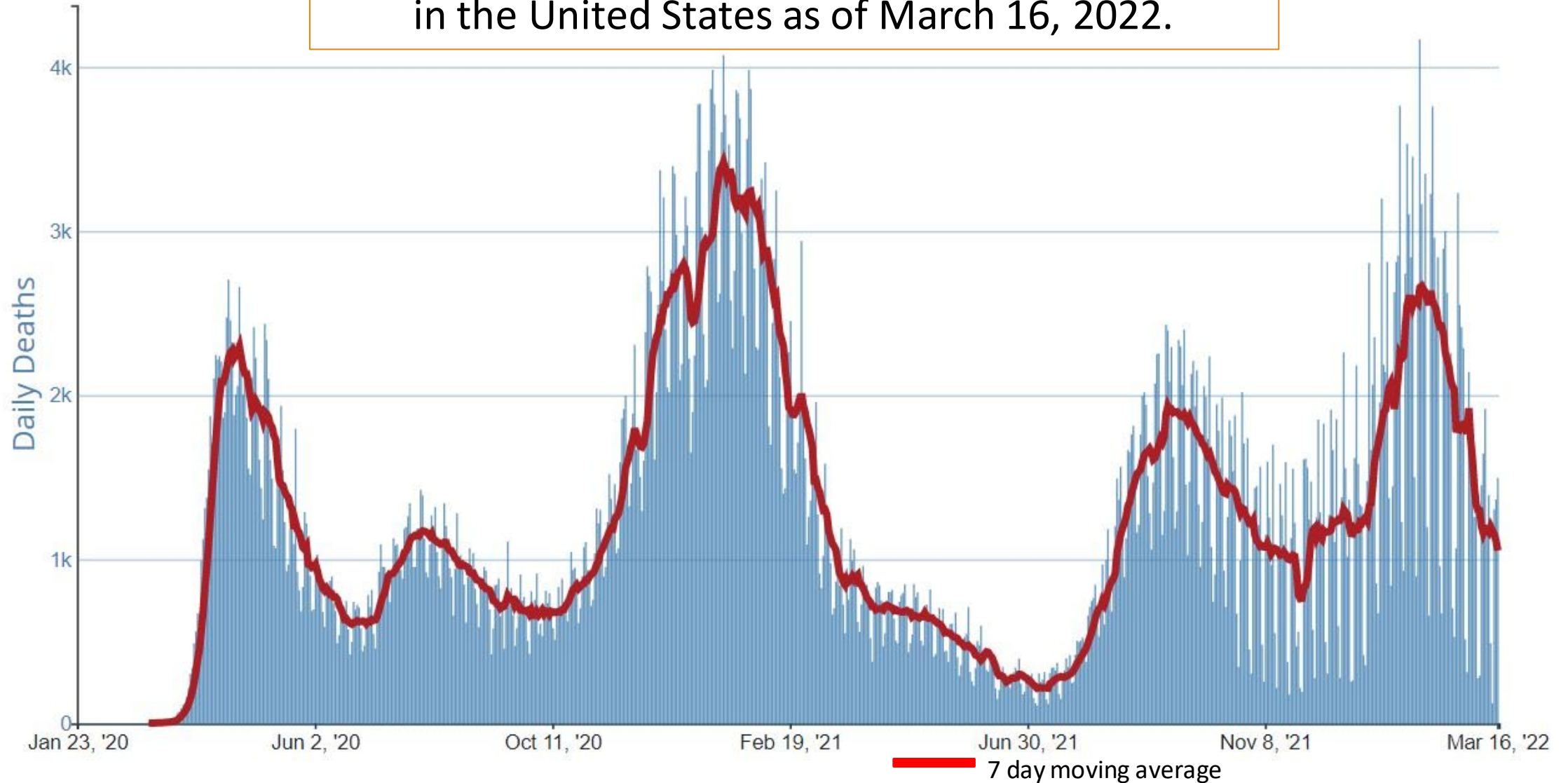
\*The most recent 30 days of data are viewable on this map. To view data outside of this range, please visit our data archive and download the raw data.

A total of 79,486,762 COVID-19 cases were reported in the United States as of March 16, 2022.



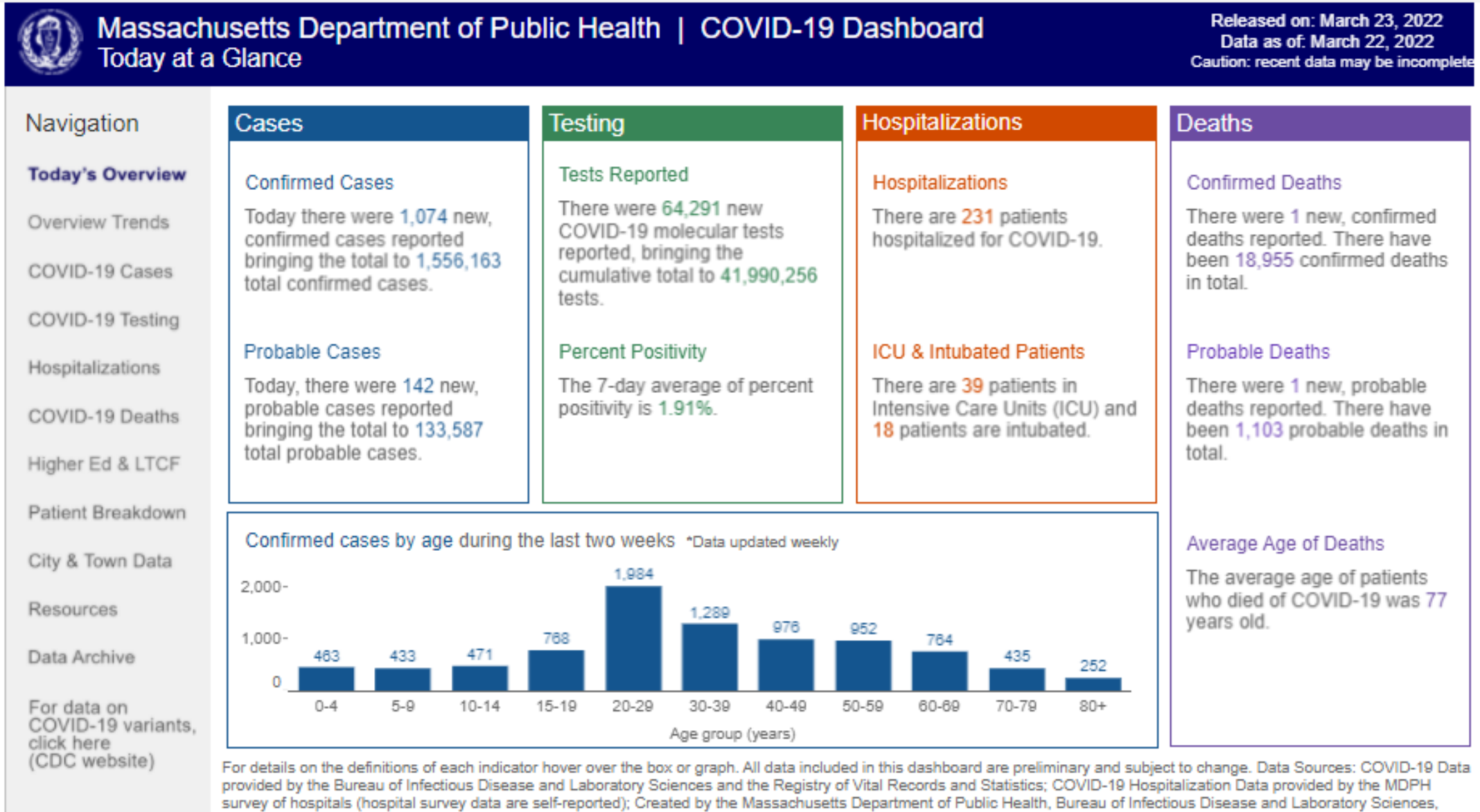
# Daily Trends in Number of COVID-19 Deaths in The United States Reported to CDC

A total of 965,575 COVID-19 deaths were reported in the United States as of March 16, 2022.





# 1,556,163 confirmed COVID-19 cases were reported in Massachusetts as of 3/22/22





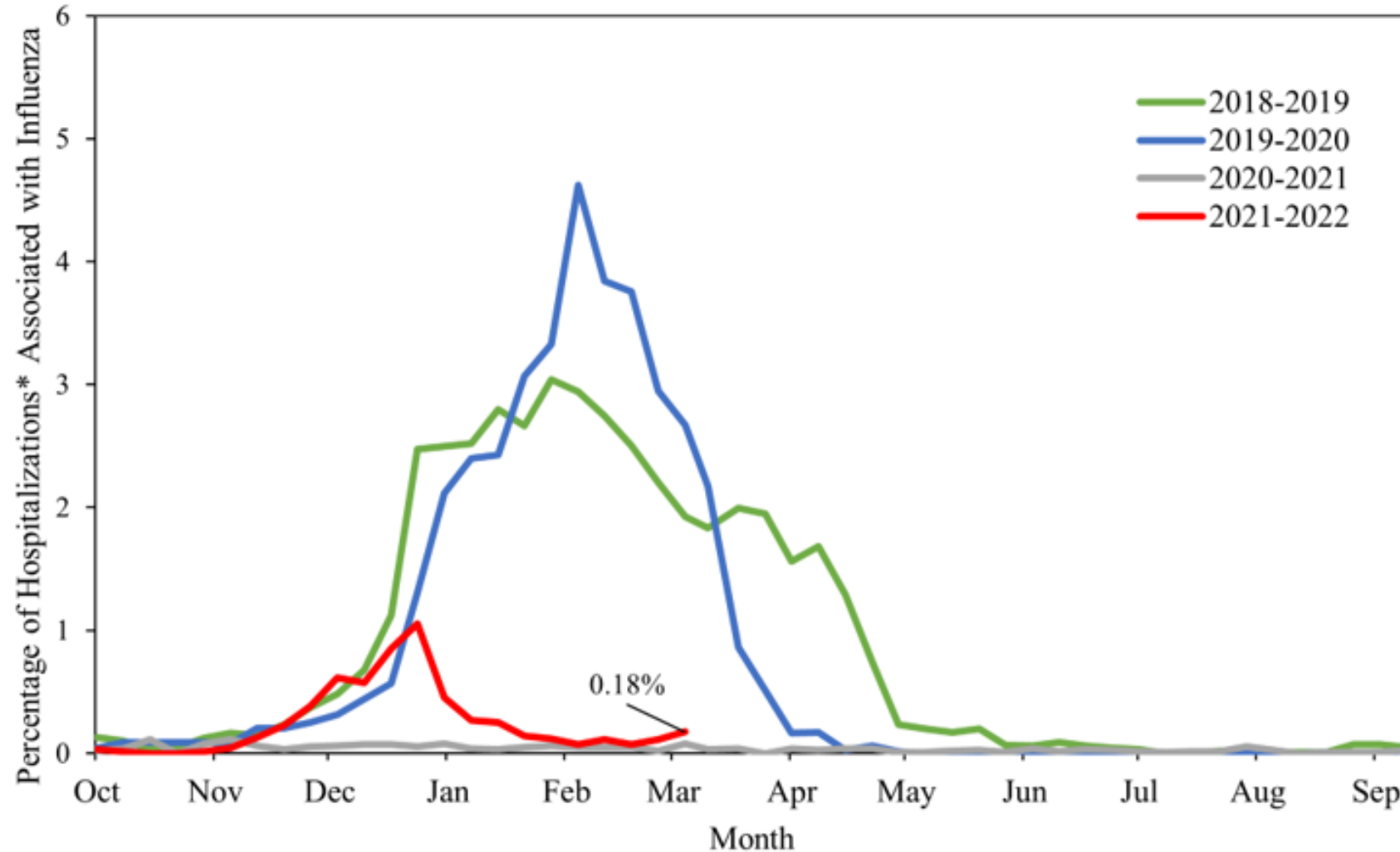
# VPDs in MA 2011-2021<sup>1</sup>

Data are current as of 3/11/2022 and are subject to change

Disease	2011	2012	2013	2014	2015	2016	2017	2018	2019	2020	2021
Diphtheria	0	0	0	0	0	0	0	0	0	0	0
Hepatitis A	40	43	46	42	35	64	53	373	193	32	20
Hepatitis B (acute)	69	61	42	36	34	32	52	48	37	16	14
Hib <5	0	2	1	1	0	1	2	1	0	0	0
Measles	24	0	1	8	0	1	0	2	3	1	0
Meningococcal Disease	14	6	11	11	12	11	11	21	14	10	9
Mumps	4	6	71	5	6	258	191	46	64	19	2
Pertussis	280	653	348	298	253	198	383	250	315	54	16
Polio	0	0	0	0	0	0	0	0	0	0	0
Pneumococcal Disease <5	40	51	24	27	20	31	21	26	23	15	19
Rubella	0	1	0	0	0	0	1	0	0	0	0
Tetanus	0	0	0	0	0	0	0	0	1	1	1
Varicella	606	628	475	469	356	289	383	291	299	87	92

<sup>1</sup>Both confirmed & probable cases are reported for measles, mumps, rubella, tetanus and varicella to better reflect the true burden of disease. All others include confirmed cases only. Data from 2021 are provisional and subject to change.

# Percentage of Hospitalizations Associated with Influenza in Massachusetts October 3, 2021 – March 12, 2022



\*All patients admitted through hospital emergency departments as captured by syndromic surveillance

# Immunization Coverage

# MA Cumulative COVID-19 Vaccine Administered

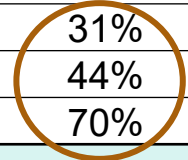
	Fully Vaccinated n	Fully Vaccinated % of pop. est.*	Booster Doses n	Booster Doses % of pop. est.*
<b>Age</b>				
5-11 Years	235,374	46%	178	<1%
12-15 Years	240,219	75%	66,434	21%
16-19 Years	264,139	70%	116,476	31%
20-64 Years	3,462,800	82%	1,852,530	44%
65+	1,090,619	93%	822,109	70%
<b>Race and Ethnicity</b>				
American Indian or Alaskan Native, non-Hispanic	4,970	43%	1,711	15%
Asian, non-Hispanic	375,988	76%	211,666	43%
Black or African American, non-Hispanic	327,987	64%	133,568	26%
Hispanic	545,320	63%	202,170	24%
Native Hawaiian or Pacific Islander, non-Hispanic	2,506	93%	966	36%
White, non-Hispanic	3,584,625	72%	2,137,976	43%
Other race, non-Hispanic	143,064	-	39,266	-
Multi race, non-Hispanic	175,494	137%	108,171	85%
Unknown race and ethnicity	133,223	-	22,234	-
<b>Sex</b>				
Female	2,797,155	78%	1,574,107	44%
Male	2,479,944	73%	1,278,664	38%
Unknown sex	16,078	-	4,957	-

Source: Massachusetts Immunization Information System as of 3/4/22

\*UMass Donahue Institute 2019 Population Estimates, IPUMS USA

# MA Cumulative COVID-19 Vaccine Administered

	Fully Vaccinated n	Fully Vaccinated % of pop. est.*	Booster Doses n	Booster Doses % of pop. est.*
<b>Age</b>				
5-11 Years	235,374	46%	178	<1%
12-15 Years	240,219	75%	66,434	21%
16-19 Years	264,139	70%	116,476	31%
20-64 Years	3,462,800	82%	1,852,530	44%
65+	1,090,619	93%	822,109	70%
<b>Race and Ethnicity</b>				
American Indian or Alaskan Native, non-Hispanic	4,970	43%	1,711	15%
Asian, non-Hispanic	375,988	76%	211,666	43%
Black or African American, non-Hispanic	327,987	64%	133,568	26%
Hispanic	545,320	63%	202,170	24%
Native Hawaiian or Pacific Islander, non-Hispanic	2,506	93%	966	36%
White, non-Hispanic	3,584,625	72%	2,137,976	43%
Other race, non-Hispanic	143,064	-	39,266	-
Multi race, non-Hispanic	175,494	137%	108,171	85%
Unknown race and ethnicity	133,223	-	22,234	-
<b>Sex</b>				
Female	2,797,155	78%	1,574,107	44%
Male	2,479,944	73%	1,278,664	38%
Unknown sex	16,078	-	4,957	-

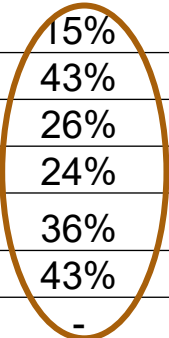


Source: Massachusetts Immunization Information System as of 3/4/22

\*UMass Donahue Institute 2019 Population Estimates, IPUMS USA

# MA Cumulative COVID-19 Vaccine Administered

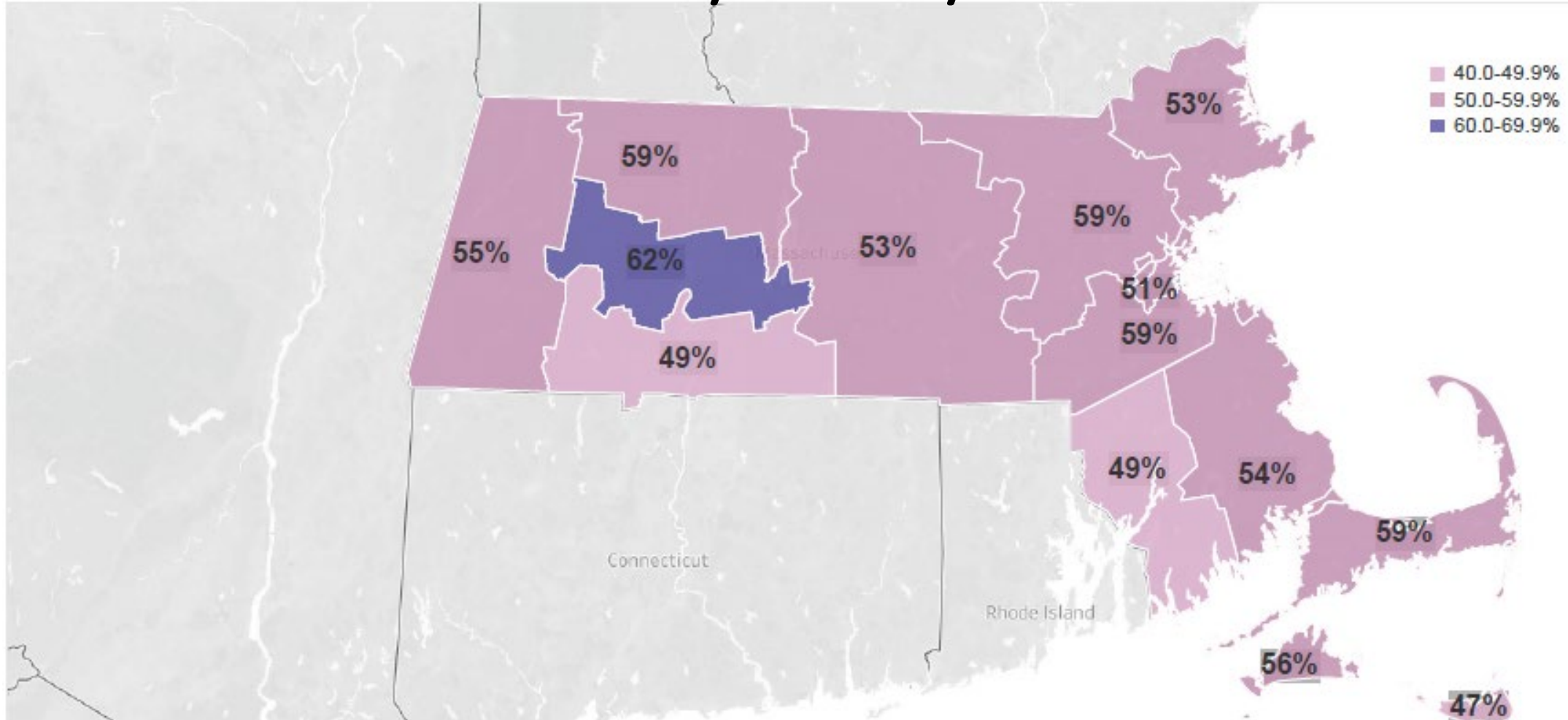
	Fully Vaccinated n	Fully Vaccinated % of pop. est.*	Booster Doses n	Booster Doses % of pop. est.*
<b>Age</b>				
5-11 Years	235,374	46%	178	<1%
12-15 Years	240,219	75%	66,434	21%
16-19 Years	264,139	70%	116,476	31%
20-64 Years	3,462,800	82%	1,852,530	44%
65+	1,090,619	93%	822,109	70%
<b>Race and Ethnicity</b>				
American Indian or Alaskan Native, non-Hispanic	4,970	43%	1,711	15%
Asian, non-Hispanic	375,988	76%	211,666	43%
Black or African American, non-Hispanic	327,987	64%	133,568	26%
Hispanic	545,320	63%	202,170	24%
Native Hawaiian or Pacific Islander, non-Hispanic	2,506	93%	966	36%
White, non-Hispanic	3,584,625	72%	2,137,976	43%
Other race, non-Hispanic	143,064	-	39,266	-
Multi race, non-Hispanic	175,494	137%	108,171	85%
Unknown race and ethnicity	133,223	-	22,234	-
<b>Sex</b>				
Female	2,797,155	78%	1,574,107	44%
Male	2,479,944	73%	1,278,664	38%
Unknown sex	16,078	-	4,957	-



Source: Massachusetts Immunization Information System as of 3/4/22

\*UMass Donahue Institute 2019 Population Estimates, IPUMS USA

# MA Cumulative % of Individuals Fully Vaccinated w/ Boosters by County of Residence



Source: Massachusetts Immunization Information System as of 3/16/22



# MA Adult Vaccination Rates, BRFSS 2017-2020

Vaccine/Group	2017	2018	2019	2020
Tdap $\geq 18$ y/o	40%	45%	45%	43%
Zoster $\geq 60$ y/o	46%	45%	42%	45%
HPV females 18-26 y/o (1+ doses)	70%	71%	74%	70%
HPV males 18-26 y/o (1+ doses)	41%	43%	45%	51%
Influenza vaccine $\geq 65$ y/o	58%	55%	68%	76%
Pneumococcal vaccine $\geq 65$ y/o	76%	73%	75%	76%
Hep B $\geq 18$ y/o	37%	41%	43%	44%
Hep B High Risk $\geq 18$ y/o	54%	61%	60%	67%

# MA Adult Vaccination Rates, BRFSS 2017-2020

Vaccine/Group	2017	2018	2019	2020
Tdap $\geq 18$ y/o	40%	45%	45%	43%
Zoster $\geq 60$ y/o	46%	45%	42%	45%
HPV females 18-26 y/o (1+ doses)	70%	71%	74%	70%
HPV males 18-26 y/o (1+ doses)	41%	43%	45%	51%
Influenza vaccine $\geq 65$ y/o	58%	55%	68%	76%
Pneumococcal vaccine $\geq 65$ y/o	76%	73%	75%	76%
Hep B $\geq 18$ y/o	37%	41%	43%	44%
Hep B High Risk $\geq 18$ y/o	54%	61%	60%	67%

# MA Flu Vaccination Rates, NIS 2019-2021

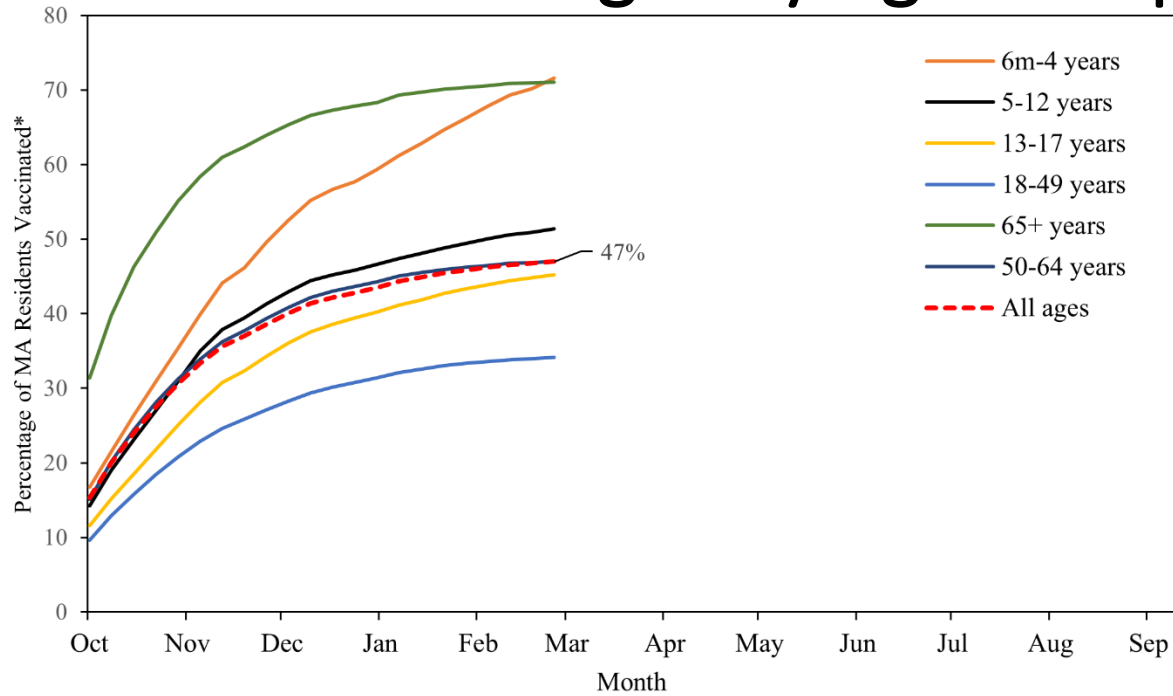
	<b>MA 2019-20</b>	<b>MA 2020-21</b>	<b>US 2020-21</b>
Everyone 6 mos+	61%	66%* (1)	52%
Children 6 mos – 17 yrs	77%	84%* (1)	59%
○ Children 6 mos – 4 yrs	84%	87% (2)	68%
○ Children 5 – 12 yrs	76%	84%* (1)	59%
○ Adolescents 13 – 17 yrs	72%	80%* (1)	51%
Adults 18 +	57%	62%* (2)	50%
○ Adults 18 – 64 y/o	51%	57%* (1)	43%
○ Adults HR 18 – 64 y/o	58%	61% (4)	51%
○ Adults 50 – 64 y/o	60%	67%* (3)	54%
○ Adults 65+	78%	80% (6)	75%

Source: 2019-21 and 2020-21 National Immunization Survey (NIS) – Flu, and BRFSS

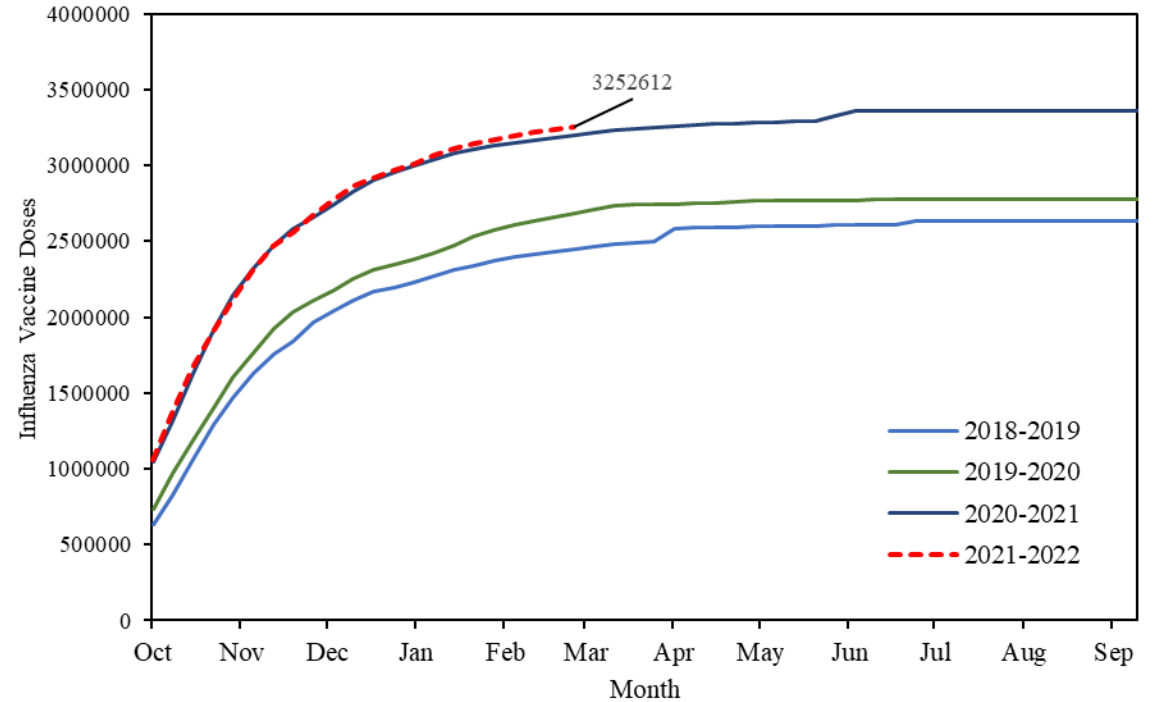
\*Statistically significant change compared to prior year

# 2021-22 Flu Vaccine Administration, MIIS, 3/5/22

## Vaccine Coverage\* by Age Group

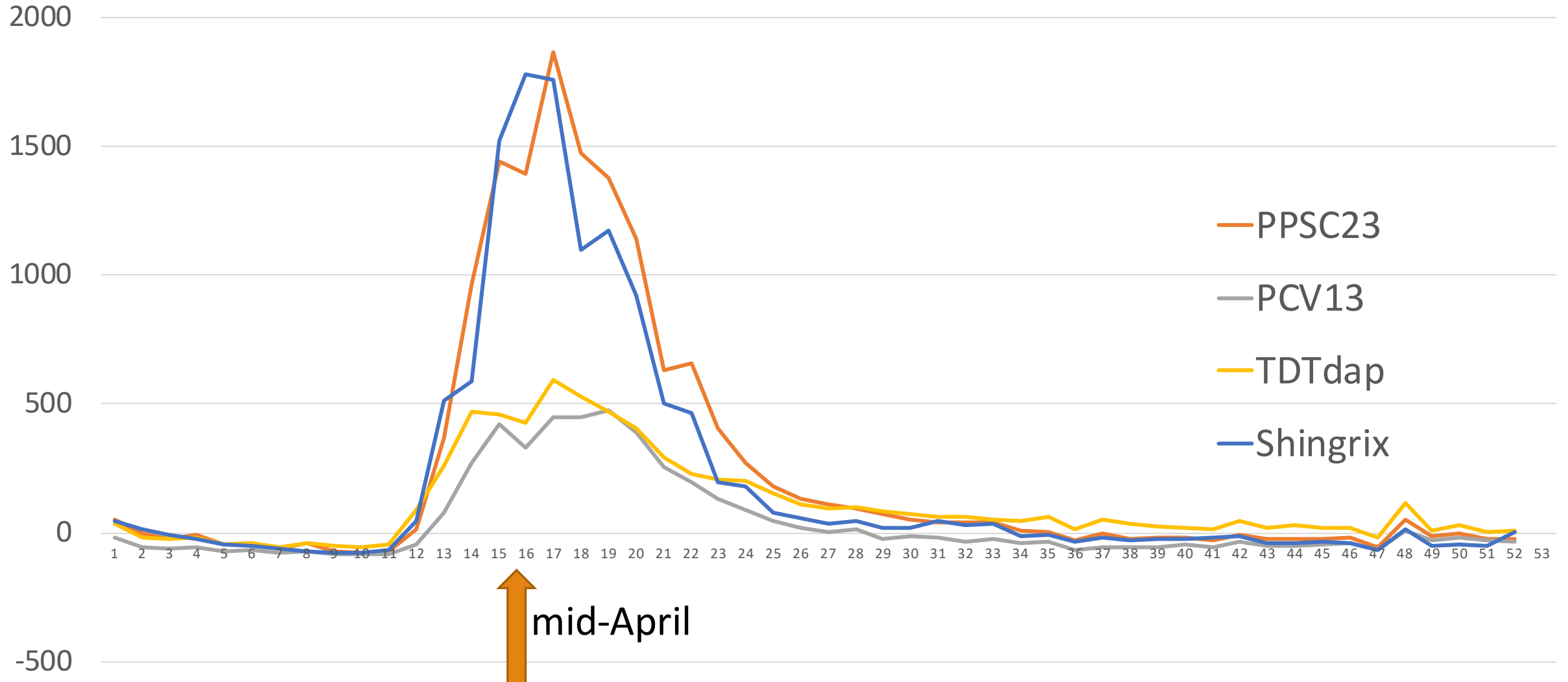


## Vaccine Administration by Year

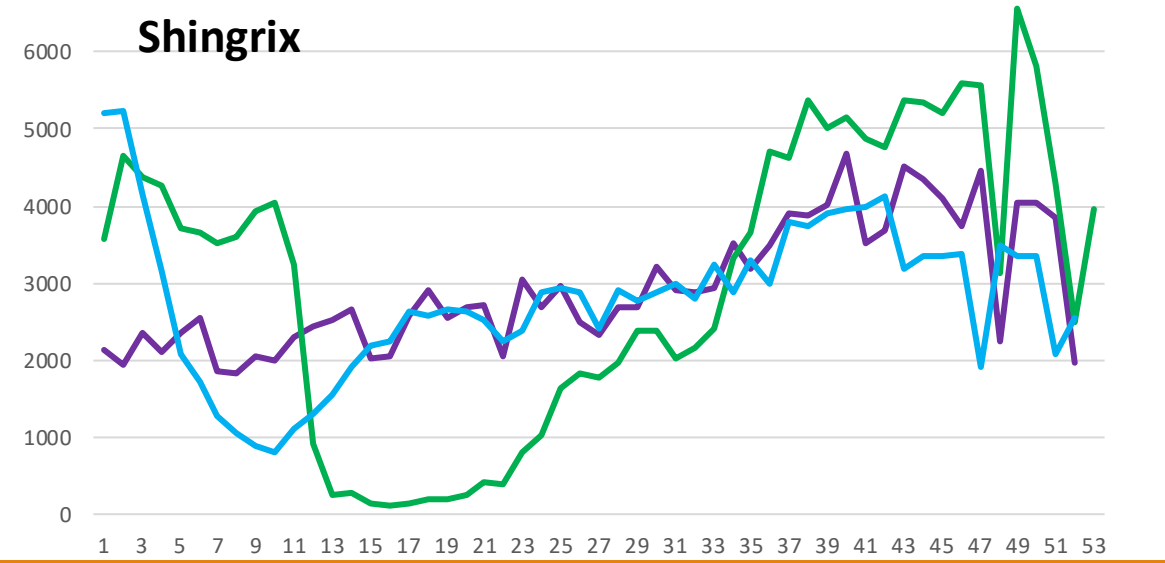
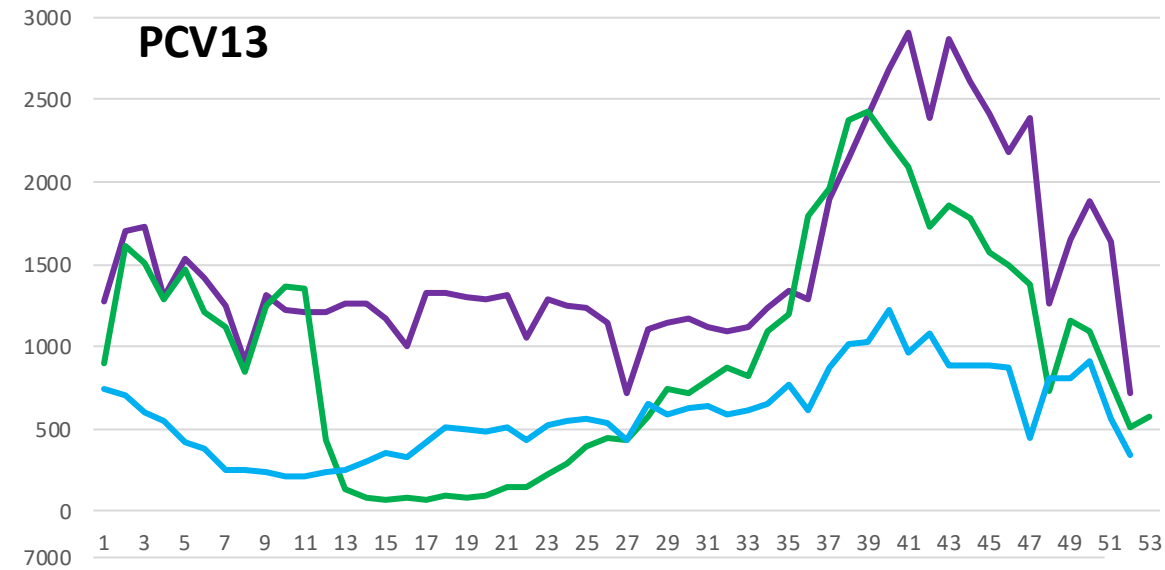
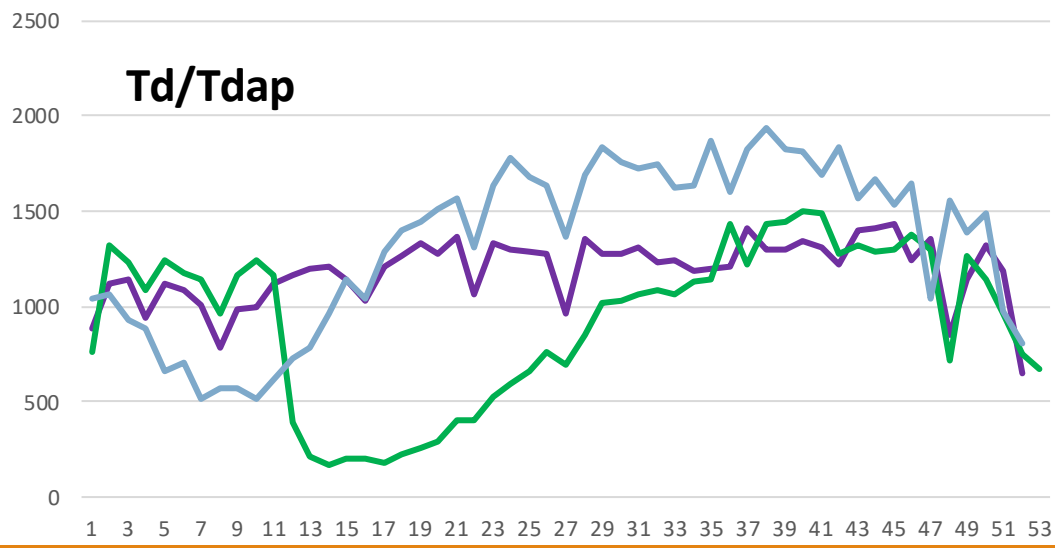
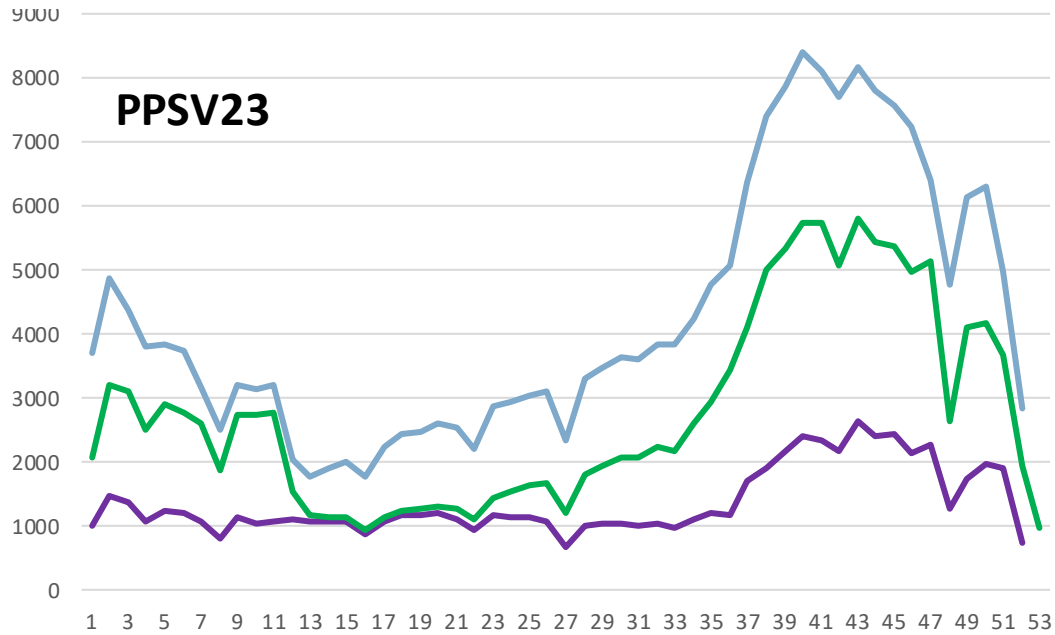


\*UMass Donahue Institute 2019 Population Estimates, IPUMS USA

# Percent Change in Routine Vaccinations from 2020 to 2021 among 65+, by MMWR Week, MIIS



# Vaccinations among 65+, 2019-21, by MMWR Week, MIIS



# Immunization IT System Rollout

- **Color**
- **MIIS**



22,500  
20,000  
17,500  
15,000  
12,500  
10,000  
7,500  
5,000  
2,500  
0

**1,783,893 Total Vaccines Administered in Color:**

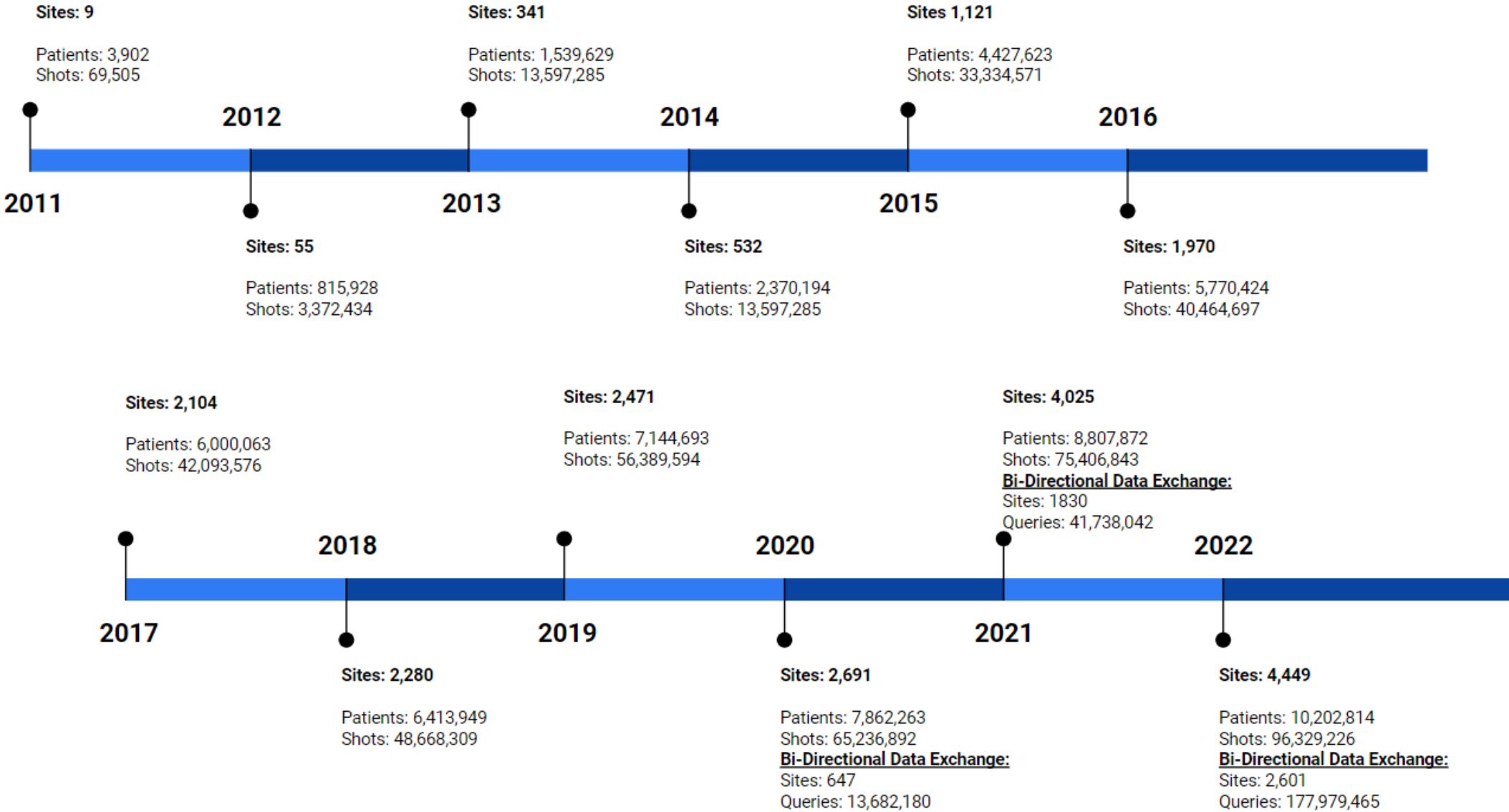
**1,733,479 COVID-19**

**50,414 non-COVID-19**

March May July September November January '22

— COVID-19 — Herpes Zoster — Influenza — Meningococcal — Tdap or DTaP

# MIIS Onboarding



## MIIS PATIENT ACCESS PORTAL: MY VAX RECORDS - *NEW*

- Patients can access their MIIS records through the new online portal
- Print or download their full immunization history or COVID-19 only certificate



# New!

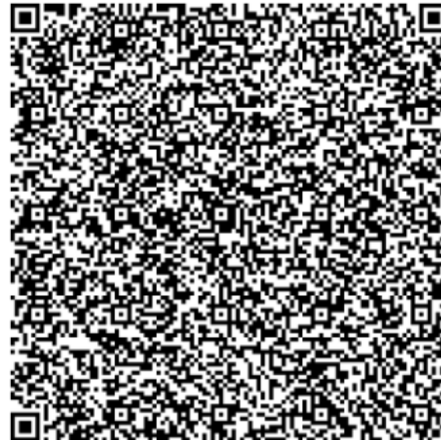
## COVID-19 SMART Health Card

- Within the portal, patients can download their SMART Health Card to their phone to have their COVID-19 vaccinations available to them at any time.
- SMART Health Cards contain just the information required to display your vaccination history and the choice to share your card is up to you.
- Smart health cards contain:
  - Your legal name and date of birth
  - Your clinical information
  - Vaccinations: type, date, and location

### COVID-19 SMART Health Card



Commonwealth of Massachusetts



The COVID-19 SMART Health Card stores your immunization information in the form of a QR code. Use your smart Health card to provide your COVID-19 vaccination information from the MIIS.

This QR code can be screen captured and saved on your mobile device or printed. For future vaccinations, you will need to generate a new QR code.

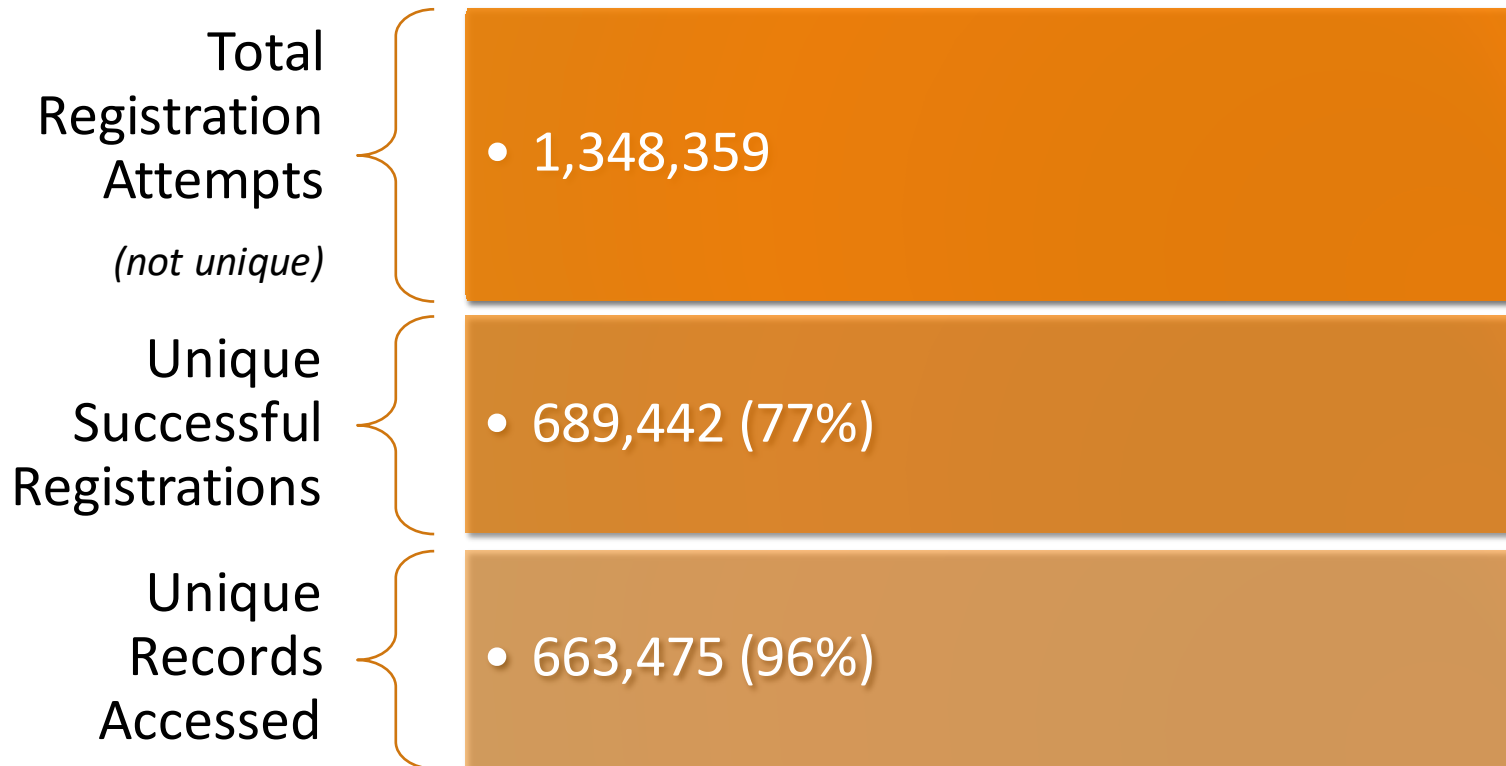
*By downloading a record you acknowledge under the penalties of perjury that the information you have provided is true to the best of your knowledge and that you have the legal authority to access and use this record.*

[Download COVID-19 SMART Health Card \(PDF\)](#)



# My Vax Records - Stats

---





**NEW!**

# Covid-19 Patient Certificate

Print a COVID-19 Patient Certificate from the MIIS

Coming later 2022 – Certificate will include SMART Health Card



Massachusetts Immunization Information System

## Certificate of COVID-19 Vaccine Record

Name: **Arya Stark**

Birth Date: 02/03/1981

Gender F

Vaccine	Date	Location
COVID-19 Moderna	09/07/2021	DPH-Bureau of Infectious Disease Prevention Response and Services Test
COVID-19 Moderna	09/01/2021	DPH-Bureau of Infectious Disease Prevention Response and Services Test



# NEW! COVID-19 COVERAGE REPORT

Age Range: 18 Year(s) to 25 Year(s) (inclusive)  
Today's Date: 09/30/2021  
Provider Name:

Birth Date Range: 10/01/1995 - 09/30/2003  
Selected PIN(s):  
Assessment Date: 09/30/2021

**Selected Parameters:**

Current WIC Participant Status: All  
Patient Status: Active

Go LIVE Date: 12/29/2014

Number of Patients Assessed: 22697 (Note: the first table excludes patients with only unspecified COVID-19 vaccines)

Evaluation of Immunization Rates as of: 09/30/2021

Status	*Count	*Percentage
Meets criteria	2275	10%
Incomplete	1217	5%
No Dose	19205	85%

\* 1 Patients with unspecified COVID-19 vaccines only are excluded

Vaccine	1 Dose	2 Dose
COVID-19 Pfizer	357	579
COVID-19 Moderna	862	1385
Johnson & Johnson	313	N/A
Mixed	N/A	4
Unspecified	0	1

\* Mixed is considered two shots of any two-dose vaccine

- Quick access to your organizations COVID-19 coverage rates
- Patient listing tables also available
- Board of Health access
- Can now upload patient list to search the MIIS for COVID-19 Coverage output



# Thank you

---

## Contact us:

### Immunization Division

617-983-6800

Fax: 617-983-6813

### MIIS Help Desk

617-983-4335

[MIISHelpDesk@state.ma.us](mailto:MIISHelpDesk@state.ma.us)

### Vaccine Management Unit

617-983-6828

[DPH-Vaccine-Management@MassMail.State.MA.US](mailto:DPH-Vaccine-Management@MassMail.State.MA.US)

Fax: 617-983-6924